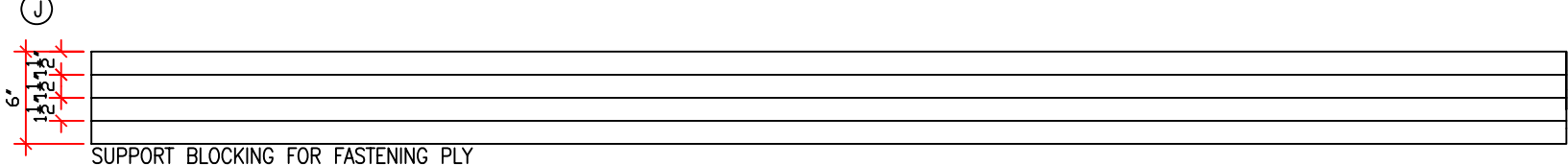
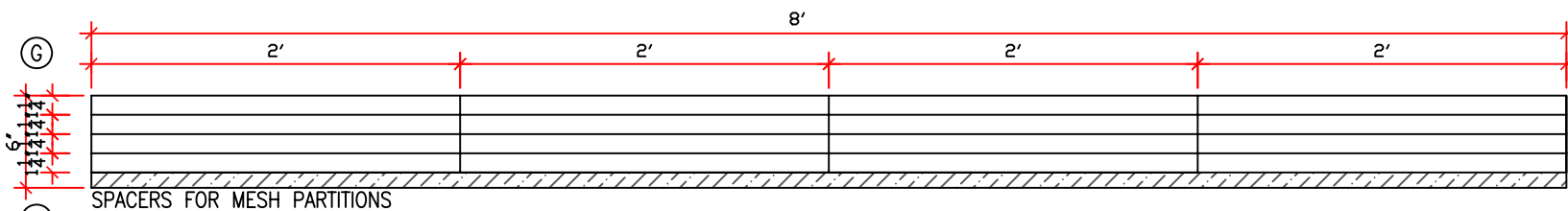


4'x8' SAWING DIAGRAM ①  
SCALE: 1" = 1'-0"

NOTE: DIMENSIONS DO NOT COMPENSATE FOR SAW BLADE WIDTHS



SAWING DIAGRAM ④  
1"x 6" X 8" BOARD  
SCALE: 1" = 1'-0"

**MATERIALS LIST:**

ITEM #	DESCRIPTION
1	1- 4'X 8' X 1/2" (or metric equivalent) sheet of pressure treated plywood
4	1- 1"x6" (3/4" X 5 1/2" FINISHED) X8" PINE OR CEDAR
2	ROOF COVERING - Aluminum sheeting or asphalt shingles roof cover
3	PVC NETTING - InterNet Inc Item # XV-1348 47.5" X 100' (BLACK) 7681 Seltzer Parkway North, Brooklyn Park, MN 554445, USA <a href="http://www.industrialnetting.com/bat_house.html">http://www.industrialnetting.com/bat_house.html</a> Phone 1-800-328-8456
4	One quart oil-based non-toxic paint for exterior surfaces
5	One tube paintable latex caulking
6	30"wide rolled Aluminum sheeting (or black asphalt shingles)
FASTENERS: Coastal areas - All stainless steel, 'Monel' or exterior grade at minimum	
7	1 1/4" stainless steel deck screws
8	1/2" stainless steel metal screws
9	# 8 stainless steel washers
10	MONEL STAPLES - "Arrow" Fastener 506M1 Model T50 OR EQUAL
11	1 - 1/2" dia X 10" min length, through bolt with 2 lock washers, 1 nut (test fit on the ground) (provided by CUC when installed in the Cayman Islands)
12	Construction adhesive 'LIQUID NAILS' or equal

- (A) BACK BOARD
- (B) FRONT UPPER
- (C) FRONT LOWER
- (D) ROOF
- (E) GABLE ENDS
- (F) TOP OF POST PLATE
- (G) PARTITION FRAME VERTICAL MEMBER
- (H) PARTITION FRAME HORIZONTAL MEMBER
- (J) VARIOUS BLOCKING

EXTRA MATERIAL  
 25 DEGREE BEVEL

**RECOMMENDED TOOLS:**

- table saw or circular saw
- variable speed drill
- screw driver bit for drill (Phillips head)
- tape measure or yard/metre stick
- caulking gun
- 1/2" drill bit
- paintbrushes
- hammer (optional)
- tin snips (optional)
- bar clamp (optional)
- sander (optional)



Notes:  
 Original Bat House design by Bat Conservation International (BCI) [www.batcon.org](http://www.batcon.org)  
 Modification for utility pole by Ron Moser of the Machine Shop. Tropical modifications by Lois Blumenthal [www.caymanwildlife.org](http://www.caymanwildlife.org)

In coastal areas it is important to use stainless or Monel fasteners since elevated bat houses are exposed to salt air. If galvanized fasteners are used, they will corrode, causing the wood to rot and the bat house will deteriorate and have a limited usable life span.

Netting must be PVC as specified. Do not substitute other types of screen or net. Experiments have shown that they tear and tangle bats. If PVC net is unavailable, use the grooved wood crevice method. To see photos and more details visit "bats" page on [www.caymanwildlife.org](http://www.caymanwildlife.org)

This design is for utility poles which are donated by Caribbean Utilities Co. Ltd (cuc). For other bat house designs that can be mounted on buildings or smaller poles, please visit [www.batcon.org](http://www.batcon.org)

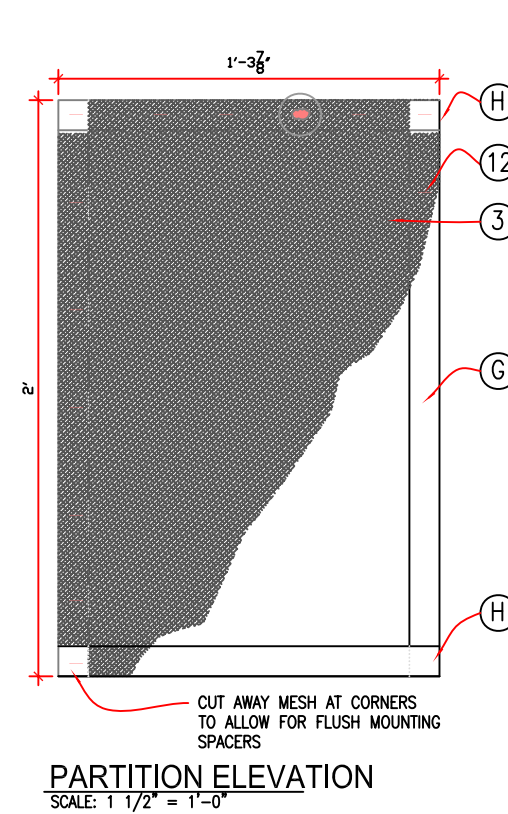
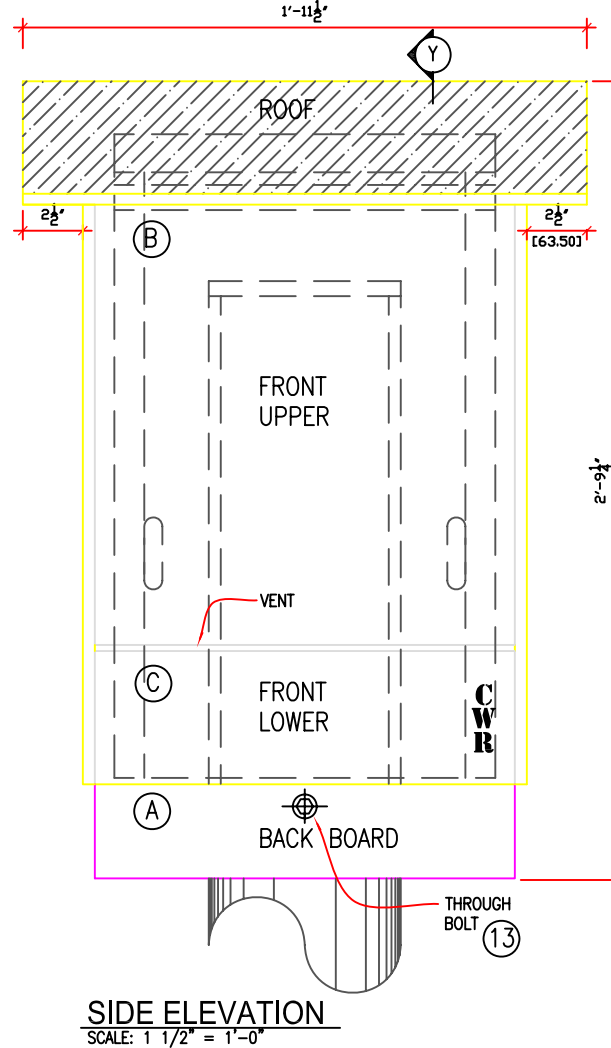
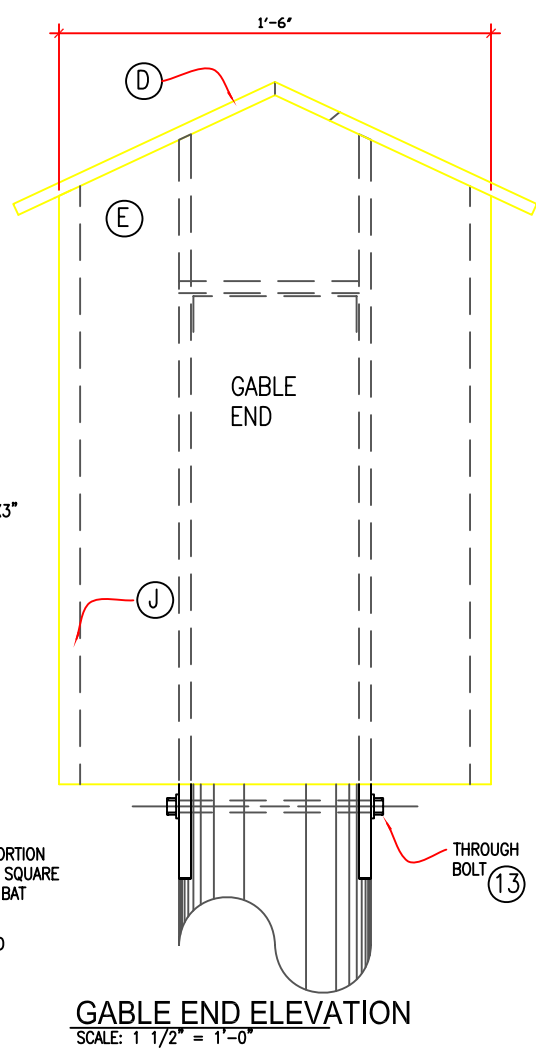
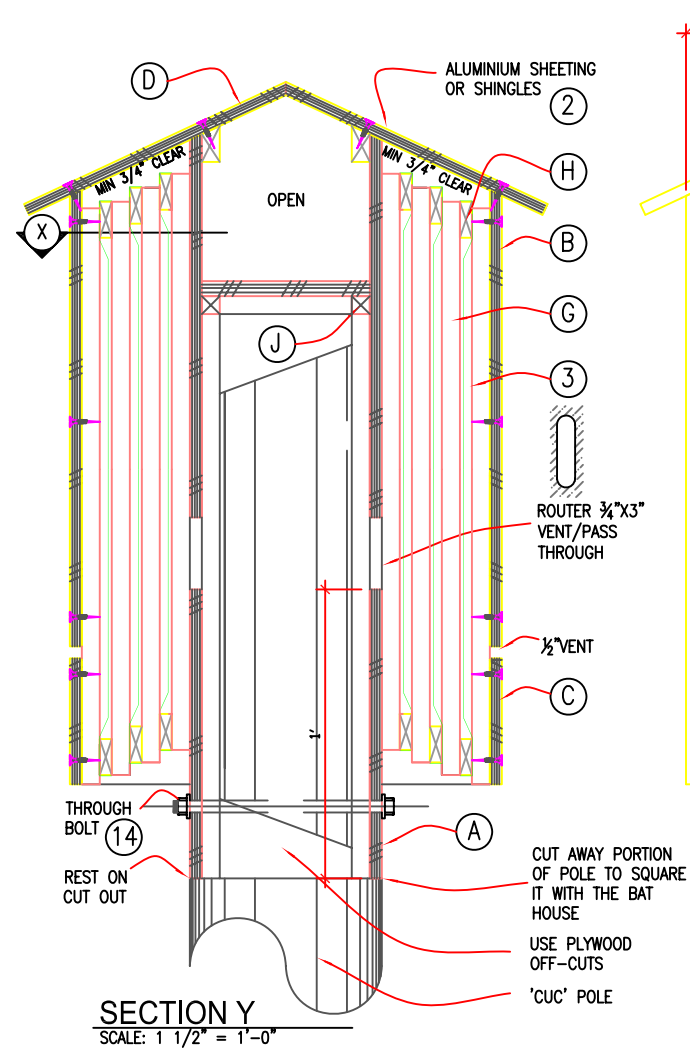
**BAT HOUSE**

- POLE MOUNTED
- COASTAL CONDITIONS

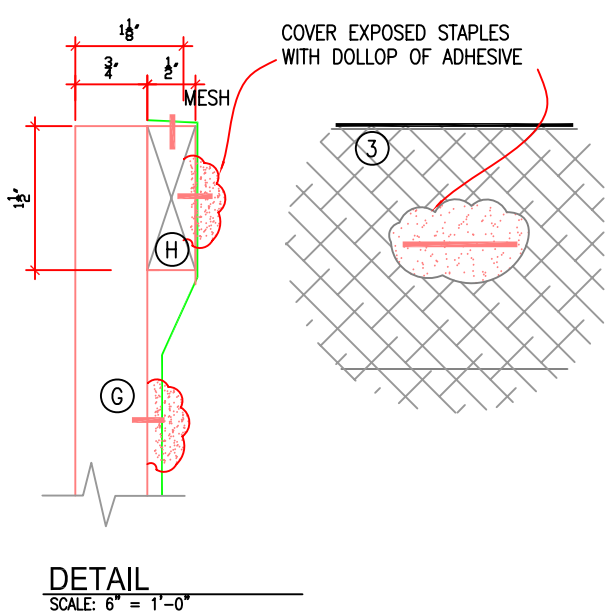
sheet Title: construction plans + specifications  
 Scale: as shown  
 Date: 6 APRIL 2011  
 Drawn By: Kelly L. Hill

Project No: Dwg. No: Revision:  
 BH-1

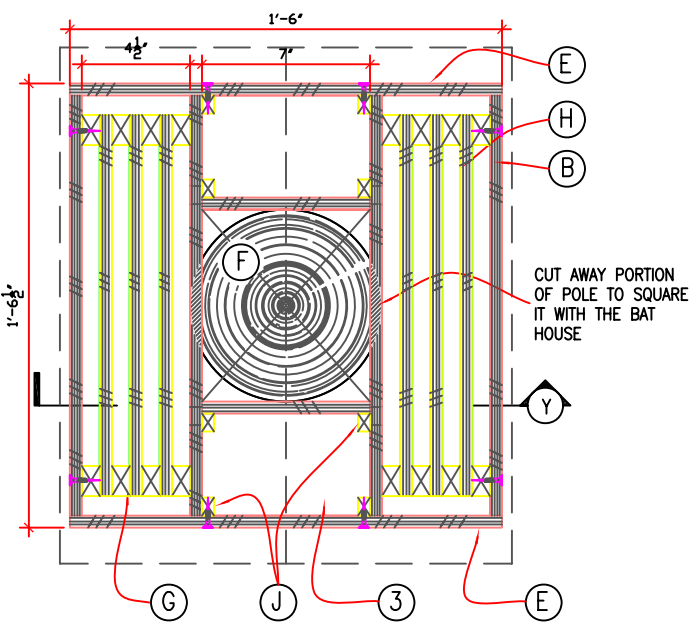




PARTITION ELEVATION  
SCALE: 1 1/2" = 1'-0"



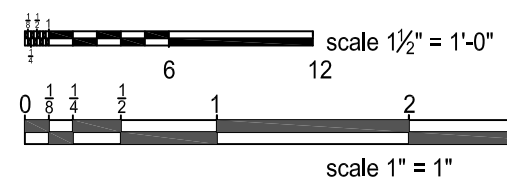
DETAIL  
SCALE: 6" = 1'-0"



PLAN SECTION -- X  
SCALE: 1 1/2" = 1'-0"

CONSTRUCTION PROCEDURE:

- ORDER #
1. Measure, mark and cut out all wood according to the sawing diagrams on this page. including drilling holes for pole mounting hardware.
  2. **Pre paint all interior surfaces prior to construction as required (1 light coat to help deter deterioration). (if more convenient, paint the sheet prior to cutting, and paint exposed edges once cut)**
  3. Fasten back boards 'A' to top of post plate 'F' using screws and construction adhesive, also blocking 'J' to strengthen.
  4. Use blocking 'J' at bottom of the back boards to create the square opening to slide over the pole as well as to keep the shape of the house prior to installing the gable ends.
  5. Using horizontal 'H' and vertical 'G' spacers create frames for mesh, glue and screw all connections.
  6. Fasten mesh to frame:
    - 6.1. Wrap mesh over top of frame.
    - 6.2. Staple mesh in place.
    - 6.3. Cover staples with adhesive where it doesn't conflict with the frame on frame installation.
  7. Fasten frames to back board one on top of the next, descending (following roof slope) as shown in section 'Y'.
  8. Fasten front upper 'B' and front lower 'C' panels to frames accordingly.
  9. Fasten gable ends 'E' to 'A', 'B' and 'C' accordingly, use a bead of construction adhesive along the edges prior to screwing in place.
  10. Fasten roof panels 'D' in place.
  11. Apply roofing '#2' material to roof panels. Either material should be well fastened and finally painted.
    - 11.1. For metal roofing; liberally apply construction adhesive to both surfaces, press in place, fold and screw to underside of the roof board.
  12. Painting: prime and paint the exterior of the BAT HOUSE a dark colour (this helps to maintain interior temperature). **A minimum of two (2) to three (3) well-applied coats is recommended because bat houses are exposed to sun and weather and because access for maintenance after mounting is difficult.**
  13. Prior to installing the Bat house, test fit and cut pole to suit.



**BAT HOUSE**

- POLE MOUNTED  
 - COASTAL CONDITIONS

sheet Title: construction plans + specifications

Scale: as shown  
Date: 6 APRIL 2011  
Drawn By: Kelly L. Hill

Project No: Dwg. No: Revision:  
**BH-2**